



MLD Series

Rotary Switch Disconnecter



Ordering Information

MLD - ① ②

① Rated Current			
020	20A	032	32A
040	40A	063	63A
080	80A	100	100A

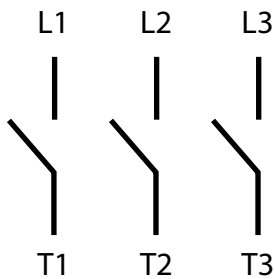
② Mounting Type	PE	Panel Type
	ESE	Extension Shaft

Specifications

Division		MLD-020	MLD-032	MLD-040	MLD-063	MLD-080	MLD-100
Rated Isolation Voltage (Ui)	V	690					
Maximum Switching Current (I th)	A	20	32	40	63	80	100
Rated Current (Ie)							
AC-23A	A	15	22	30	43	57	70
AC-3	A	11	15	22	36	43	57
Rated Voltage (Ue)	V	240 440	240 440	240 440	240 440	240 440	240 440
Contact Capacity							
AC-23A	kW	3.7 5.5	5.5 11	7.5 15	9 22	15 30	22 37
AC-3	kW	2.7 3.7	4 7.5	5.5 11	8 18.5	9 22	15 30
Motor Load							
	V	240 440	240 440	240 440	240 440	240 440	240 440
	HP	2 3	5 10	7.5 15	10 20	20 40	25 50
Icw/s	A	180	264	360	516	684	840
Wire	mm ²	1.25 - 5.5	2 - 14	2 - 14	2 - 38	2 - 38	2 - 60
Tightening Torque	N-m	0.8(8.16kgf-cm)		1.2(12.24kgf-cm)		2.5(25.49kgf-cm)	

* Workable temperature : -25 ~ 70°C (With no icing)

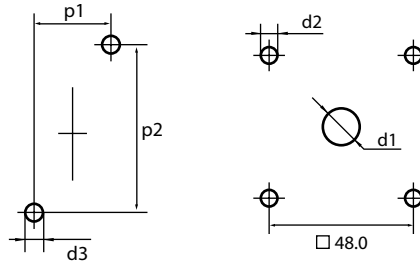
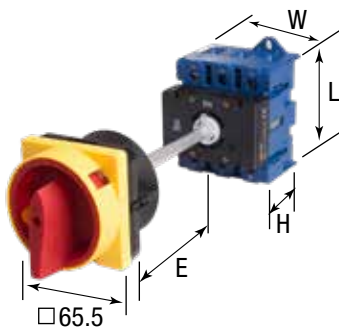
Contact Diagram



Dimensions

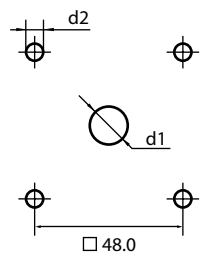
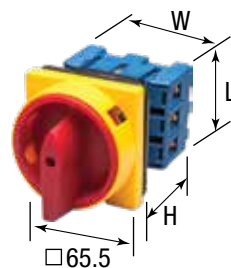
unit: mm

MLD-ESE Series



Model	Switch				Panel				
	H	L	W	E	d1	d2	d3	p1	p2
MLD-020	51	55	43	150	20	4.2	4.2	22	60
MLD-032	51	55	43	150	20	4.2	4.2	22	60
MLD-040	61	64	50	150	20	4.2	4.2	22	70
MLD-063	61	64	50	150	20	4.2	4.2	22	70
MLD-080	68	81	71	150	20	4.2	4.2	25	90
MLD-100	68	81	71	150	20	5.2	5.2	25	90

MLD-PE Series



Model	Switch			Panel	
	H	L	W	d1	d2
MLD-020	55	55	43	20	4.2
MLD-032	55	55	43	20	4.2
MLD-040	60	65	50	20	4.2
MLD-063	60	65	50	20	4.2
MLD-080	70	80	70	20	4.2
MLD-100	70	80	70	20	5.2