



AGD Series

Dual Door Type Enclosures

- Pre-assembled cover and transparent window
- Built-in hinge and stainless steel latch
- Detachable cover for easy access
- Fiberglass reinforced polycarbonate base



Specifications

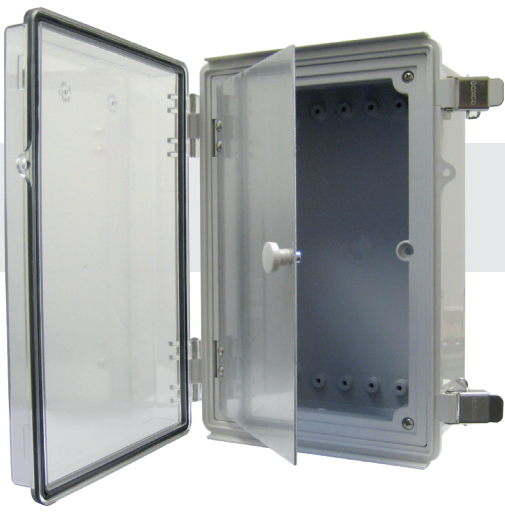
Protection Level	IP66(ARD) IP64(AGD)
Certification	CE, TUV, RoHS
Temperature range	ABS: -40°C to 70°C (-40°F to 158°F)
	PC: -40°C to 110°C (-40°F to 230°F)
Flammability Rating	ABS: UL94-HB
	PC: UL94-V-0, 5VA, 94-HB

*The base of Polycarbonate model contains 10% glass fiber for reinforcement

Part Numbers and Size

Models		Size		Back Panels		IP Rating
ABS	PC	mm	inches	Steel 1.6mm +	Plastic 3mm +	
BC-ARD-253517	BC-CRD-253517	250 x 350 x 170	9.84 x 13.78 x 6.69	BC-2535ST	BC-2535P	IP 66
BC-ARD-253519	BC-CRD-253519	250 x 350 x 190	9.84 x 13.78 x 7.48	BC-2535ST	BC-2535P	
BC-AGD-354513	BC-CGD-354513	350 x 450 x 130	13.78 x 17.72 x 5.12	BC-3545ST	BC-3545P	IP 64
BC-AGD-354517	BC-CGD-354517	350 x 450 x 170	13.78 x 17.72 x 6.69	BC-3545ST	BC-3545P	
BC-AGD-354521	BC-CGD-354521	350 x 450 x 210	13.78 x 17.72 x 8.27	BC-3545ST	BC-3545P	





ATF series

Swing Panel Type Enclosures



- Pre-assembled cover and transparent window
- Built-in hinge and stainless steel latch
- Detachable cover for easy access
- UL Listed (UL508A): Ref.# E343339 (PC Models)
- Meets IP66/67, NEMA 4X/6 specifications
- Fiberglass reinforced polycarbonate base

Specifications

Protection Level	Dust/Water proof: IP66/67, NEMA 4X/6
	Impact test: IK07/08
Certification	UL508A(PC), CE, TUV, RoHS
Temperature range	ABS: -40°C to 70°C (-40°F to 158°F)
	PC: -40°C to 110°C (-40°F to 230°F)
Flammability Rating	ABS: UL94-HB
	PC: UL94-V-0, 5VA, 94-HB

* The base of Polycarbonate model contains 10% glass fiber for reinforcement

Part Numbers and Size

Models		Size		Back Panels	
ABS	PC (UL508A)	mm	inches	Steel 1.6mm+	Plastic 3mm+
BC-ATF-203013	BC-CTF-203013	200 x 300 x 130	7.87 x 11.81 x 5.12	BC-2030ST	BC-2030P
BC-ATF-203015	BC-CTF-203015	200 x 300 x 150	7.87 x 11.81 x 5.91	BC-2030ST	BC-2030P
BC-ATF-203018	BC-CTF-203018	200 x 300 x 180	7.87 x 11.81 x 7.09	BC-2030ST	BC-2030P
BC-ATF-253515	BC-CTF-253515	250 x 350 x 150	9.84 x 13.78 x 5.91	BC-2535ST	BC-2535P
BC-ATF-253518	BC-CTF-253518	250 x 350 x 180	9.84 x 13.78 x 7.09	BC-2535ST	BC-2535P
BC-ATF-282813	BC-CTF-282813	280 x 280 x 130	11.02 x 11.02 x 5.12	BC-2828ST	BC-2828P
BC-ATF-283813	BC-CTF-283813	280 x 380 x 130	11.02 x 14.96 x 5.12	BC-2838ST	BC-2838P
BC-ATF-303015	BC-CTF-303015	300 x 300 x 150	11.81 x 11.81 x 5.91	BC-3030ST	BC-3030P
BC-ATF-303018	BC-CTF-303018	300 x 300 x 180	11.81 x 11.81 x 7.09	BC-3030ST	BC-3030P
BC-ATF-304015	BC-CTF-304015	300 x 400 x 150	11.81 x 15.75 x 5.91	BC-3040ST	BC-3040P
BC-ATF-304018	BC-CTF-304018	300 x 400 x 180	11.81 x 15.75 x 7.09	BC-3040ST	BC-3040P
BC-ATF-354516	BC-CTF-354516	350 x 450 x 160	13.78 x 17.72 x 6.30	BC-3545ST	BC-3545P
BC-ATF-354520	BC-CTF-354520	350 x 450 x 200	13.78 x 17.72 x 7.87	BC-3545ST	BC-3545P
BC-ATF-405016	BC-CTF-405016	400 x 500 x 160	15.75 x 19.69 x 6.30	BC-4050ST	BC-4050P
BC-ATF-405020	BC-CTF-405020	400 x 500 x 200	15.75 x 19.69 x 7.87	BC-4050ST	BC-4050P
BC-ATF-406018	BC-CTF-406018	400 x 600 x 180	15.75 x 23.62 x 7.09	BC-4060ST	BC-4060P
BC-ATF-406023	BC-CTF-406023	400 x 600 x 230	15.75 x 23.62 x 9.06	BC-4060ST	BC-4060P
BC-ATF-506018	BC-CTF-506018	530 x 630 x 185	20.87 x 24.80 x 7.28	BC-5060ST	BC-5060P
BC-ATF-506025	BC-CTF-506025	530 x 630 x 255	20.87 x 24.80 x 10.04	BC-5060ST	BC-5060P

Assembly of Dual Door Kits

